



# CEDAR RIDGE AT PRESIDIO FINAL PLAT

PORTION OF SECTION 19, TOWNSHIP 21 NORTH, RANGE 7 EAST,  
GILA AND SALT RIVER MERIDIAN,  
CITY OF FLAGSTAFF, COCONINO COUNTY, ARIZONA

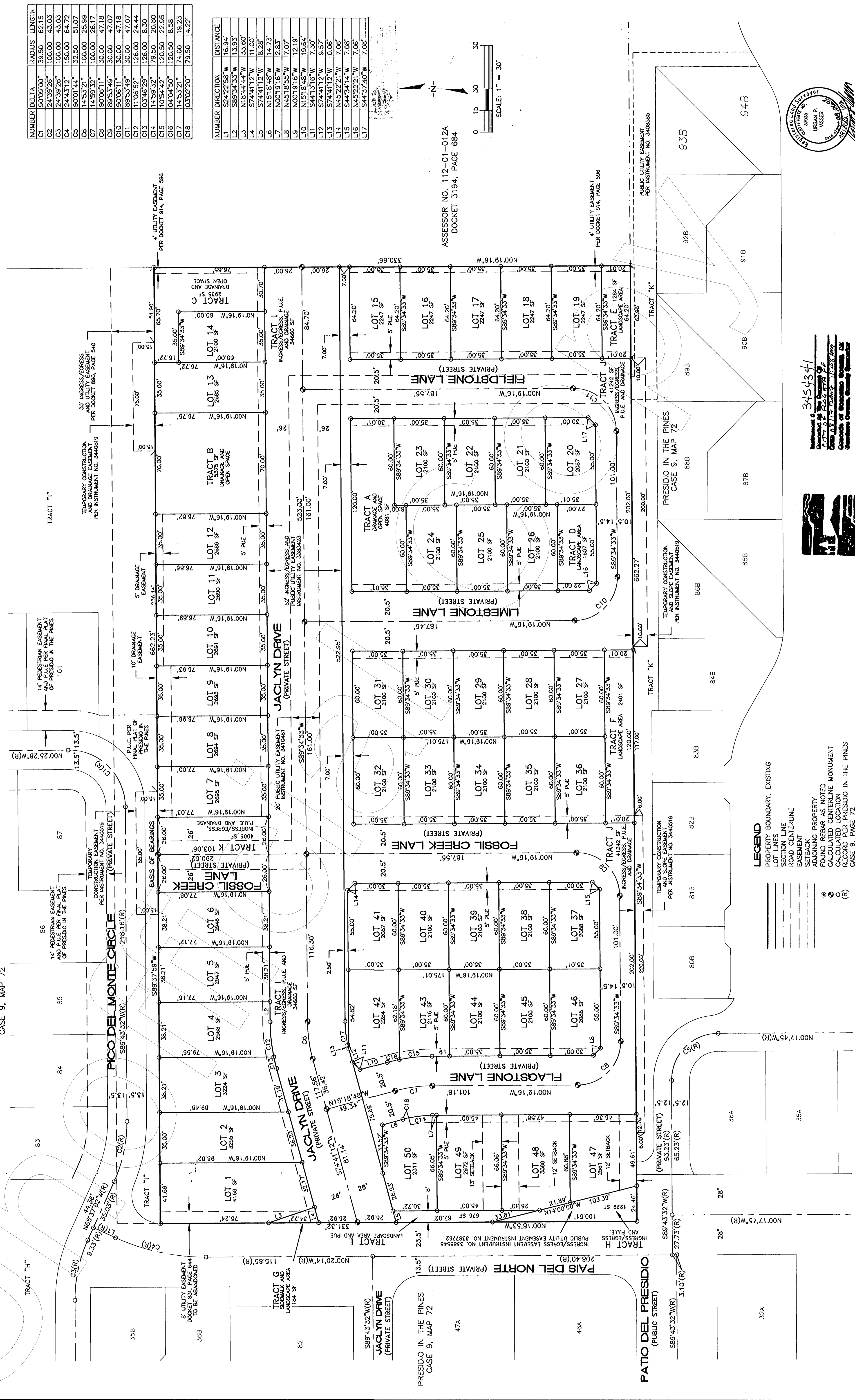
07/26/07

WOODSON ENGINEERING AND SURVEYING INC.  
124 N. ELDEN ST., FLAGSTAFF, AZ 86001 • PHONE: (928) 774-4636 FAX: (928) 774-4646

105043

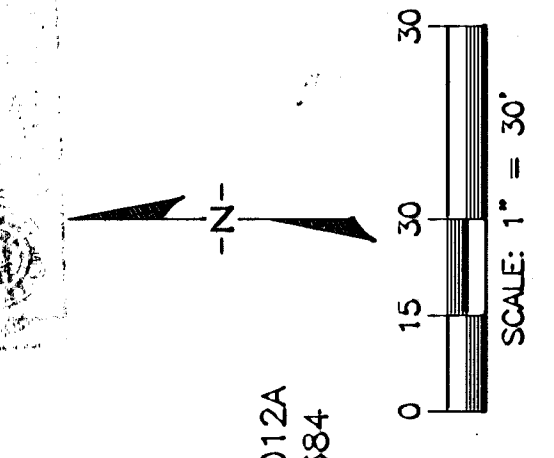
CEDAR RIDGE AT PRESIDIO  
FINAL PLAT

PREPARED BY: MCG/MDS  
START DATE: 03/23/07  
PROJ. NO.: 105043  
FIN. 105043-F-PLAT.DWG

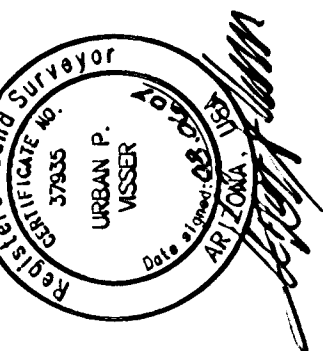


NUMBER	DELTA	RADIUS	LENGTH
C1	90°09'00"	39.50	62.15
C2	24°39'26"	100.00	43.03
C3	24°43'12"	100.00	43.03
C4	24°43'12"	150.00	64.72
C5	90°01'44"	32.50	51.07
C6	14°53'21"	100.00	25.99
C7	14°58'32"	100.00	26.17
C8	90°06'11"	30.00	47.18
C9	80°53'49"	30.00	47.07
C10	90°06'11"	30.00	47.18
C11	89°53'49"	30.00	47.07
C12	11°06'52"	126.00	124.44
C13	03°46'29"	126.00	18.30
C14	14°54'42"	79.50	20.80
C15	10°54'42"	120.50	22.95
C16	04°04'50"	120.50	18.58
C17	14°53'21"	74.00	19.23
C18	03°02'20"	79.50	4.22

NUMBER	DIRECTION	DISTANCE
L1	S24°22'38"W	16.94
L2	S89°34'33"W	13.95
L3	N18°44'44"W	33.60
L4	S74°41'12"W	11.00
L5	S74°41'12"W	18.28
L6	N15°18'48"W	14.73
L7	N00°19'16"W	2.83
L8	N45°18'55"W	7.07
L9	N00°19'16"W	12.19
L10	N15°18'48"W	19.64
L11	S44°13'16"W	7.30
L12	S74°41'12"W	9.57
L13	S74°41'12"W	0.06
L14	N45°22'21"W	7.06
L15	S44°13'16"W	7.06
L16	N45°22'21"W	7.06
L17	S44°13'16"W	7.06



ASSESSOR NO. 112-01-012A  
DOCKET 3194, PAGE 684



3454341  
 Prepared by: MCG/MDS  
 Start Date: 03/23/07  
 Proj. No.: 105043  
 Fin. 105043-F-PLAT.DWG



**LEGEND**

- PROPERTY BOUNDARY, EXISTING
- LOT LINES
- SECTION LINE
- ROAD CENTERLINE
- EASEMENT
- SETBACK
- ADJOINING PROPERTY
- FOUND REBAR AS NOTED
- CALCULATED CENTERLINE MONUMENT
- CALCULATED LOCATION RECORD PER PRESIDIO IN THE PINES CASE 9, MAP 72